

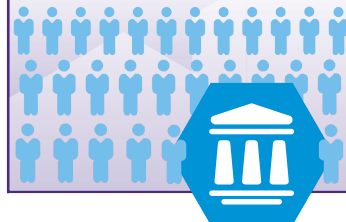
# 2016/2017 ANNUAL REPORT HEALTH SCIENCES LIBRARY

## ALIGNED WITH THE MISSION OF LSU HEALTH SHREVEPORT

The Health Sciences Library provides essential resources and services for the healing, teaching & discovery missions of LSU Health Shreveport.

## 2016/2017 at a glance:

The Library is one of the busiest places on campus, with **84,970** visits



Websites managed by the Library had **1,195,974** page views



More than **227,000** full-text downloads from our e-journals



**67%** increase in completed Writing Consultations



### Healing

#### *Library resources available at the point-of-care*

- Key point-of-care databases (UpToDate, Visual Dx and DynaMed Plus) are integrated into Epic
- Library faculty updated the contact form that lets providers directly e-mail the Library from Epic
- Library faculty send weekly patient safety literature alerts to designated personnel
- Library faculty continue to develop healthelinks with reputable, patient-friendly information on health topics – healthelinks had over 90,000 page views in 2016/2017



### Teaching

#### *Library staff reached learners in all 3 schools*

- Library faculty taught 222 hours to 2,352 learners
- Library staff completed 565 writing consultations for students, faculty & staff
- Library Systems staff certified Library computers for 98 departmental exams
- Learners spent 4,818 hours answering 57,827 practice questions in the Library's test preparation subscription, Board Vitals



### Discovering *The Library's collections are among the most used resources on campus*

- 42,691 uses of e-books
- 227,452 full-text downloads from e-journals
- 387,960 searches of databases or point-of-care reference tools



“I am one of the biggest advocates of you and your staff.”

– Physician

## HEALTH SCIENCES LIBRARY STAFF

“Learning how to use a database for research was very helpful because I would have been lost otherwise.”

– Student

Library staff answered  
**4,148** questions of all kinds



### *Library staff are good stewards of limited resources*



- >50% of our e-journal subscriptions are through consortia providing favorable pricing



- Library faculty remain professionally active, while optimizing travel budgets: carpooling, sharing hotel rooms and/or staying with relatives for free, and successfully obtaining external funding that pays for professional travel



- Much of the continuing education completed by the Library staff is free



- Library faculty and staff engage in ongoing cross-training to optimize use of staff time

“You’ve gone above and beyond for this project.”

– Staff Member

Library staff processed  
**2,029** interlibrary  
loan requests



“You guys are amazing. You work extremely hard at helping the writers and are very approachable.”

– About the Library’s Writing Consultants